



Saint Elizabeth Community

Where RI seniors come first

News

Winter 2019

Passionate About Helping Others Certified Nursing Assistants in Our Community

Kind, thoughtful, knowledgeable, compassionate...these are words that are often used when families or patients describe our certified nursing assistants (CNAs). At Saint Elizabeth Community, CNAs are dedicated caregivers who share a passion for helping others, touching the lives of those in their care, and often their families.

Saint Elizabeth Community has many settings, along a continuum of care, that provide opportunities for CNAs to work in an environment best suited for their unique personalities, skill sets, and needs.

CNAs who work in **home care** at Cathleen Naughton Associates, enjoy the independence of caring for clients in their homes one to one, and many like the variety of going from one patient home to another. At Cornerstone's **adult day centers**, the hours are ideal for CNAs who prefer to work in the day and have time off on holidays, and most weekends. The comfortable pace of life within Saint Elizabeth Court, our **assisted living residence**, is enjoyed by CNAs and allows for time to engage with residents as they support them to live independently.

Staff providing care to **long term** residents at Saint Elizabeth Manor and Saint Elizabeth Home develop close bonds with residents and their families, and enjoy being part of a team of caregivers providing individualized care. CNAs caring for **short term** rehab patients find it rewarding to see patients improve and to be part of their recovery prior to returning home. And the unique opportunity only found in our **GREEN HOUSE® Homes** supports CNAs who are cross trained in various areas and work on self-directed teams to care for a small household of residents.

CNAs within Saint Elizabeth Community have a wide array of work and life experiences, however, the major trait CNAs have in common is their desire to help others and their commitment to those in their care. Saint Elizabeth Community is fortunate to have such a caring and dedicated team!



Carol Paull, CNA, Cornerstone Adult Services



Nicole Cowman, CNA, Saint Elizabeth Home, short term rehab



Jennifer DaSilva, CNA, CMT, Saint Elizabeth Manor, long term care



Barbara Sanders, CNA, CMT, Saint Elizabeth Court



Joann Kitkowska, CNA, Cathleen Naughton Associates



Bobby Lepre, CNA (Shahbaz) THE GREEN HOUSE® Homes

 www.facebook.com/SaintElizabethCommunity
www.stelizabethcommunity.org

Saint Elizabeth Community is a not for profit 501(c)(3), charitable organization



Dear Friends:

Workforce is an issue that has come to the forefront of our recent strategic planning, and in 2019 it will be one of the main focuses of Saint Elizabeth Community. To hire, train and retain exceptional staff at all levels is a priority. It is predicted that by 2030, there will be more than 100,000 more individuals than today over 65 in RI. Who will care for this aging population? The caregiver shortage is a national problem. The New York Times wrote in 2014, (<https://newoldage.blogs.nytimes.com/2014/02/26/a-shortage-of-caregivers>), “More than 1.3 million new paid caregivers will be needed to meet demand over the next decade.

In 2020 the direct care workforce — by that point, about 5 million strong — will become the largest occupation in the United States, surpassing the number of retail salespeople.”

Health care has the unique challenge of being an industry with more open positions than the current work force can fill. There is great competition among providers for staff, especially Certified Nursing Assistants. Saint Elizabeth Community believes that the staffing ratio of staff to patients is important, and we strive to maintain strong staffing ratios. And for all providers, balancing a strong hourly rate with reimbursement from insurance providers including Medicaid is a challenge.

Our front page story highlights the many opportunities for CNAs within Saint Elizabeth Community, and shows six CNAs working in different settings. Many of our CNAs began their careers through our CNA training classes. Information about upcoming CNA classes can be found on the back page of this newsletter and opportunities for currently licensed CNAs can be found on our website at www.stelizabethcommunity.org.

To find a solution to the workforce issue will require collaboration with external groups in both the private and public sector. Saint Elizabeth Community will seek to be innovative in our approach to a solution, and to shine light on this issue in RI so we can come together to establish the workforce needed to care for aging Rhode Islanders.

Sincerely,

Steven J. Horowitz
President and CEO

Dementia Overview App

A helpful new resource for caregivers

One in ten people in the United States, 65 and older, has Alzheimer’s or a related dementia illness, so chances are you or someone you know is dealing with this at home. And being a caregiver of someone with dementia can be tough, especially if you’re trying to figure out what to expect from a loved one.

Healthcentric Advisors has created the Dementia Overview app for those looking for advice and information on caring for people living with dementia. The app was written by Linda Peckham, Nurse Manager of Saint Elizabeth Home’s memory care neighborhood and is tailored for family and professional caregivers trying to understand, navigate, and respond to behaviors seen in those with dementia.

The Dementia Overview app is available for download on the Apple App Store or on Google Play. Learn more about the app and the organization that launched it at healthcentricadvisors.org.

Dementia Overview Mobile App

- Learn about Dementia
- Test your knowledge
- Recognize the signs
- Read personal stories



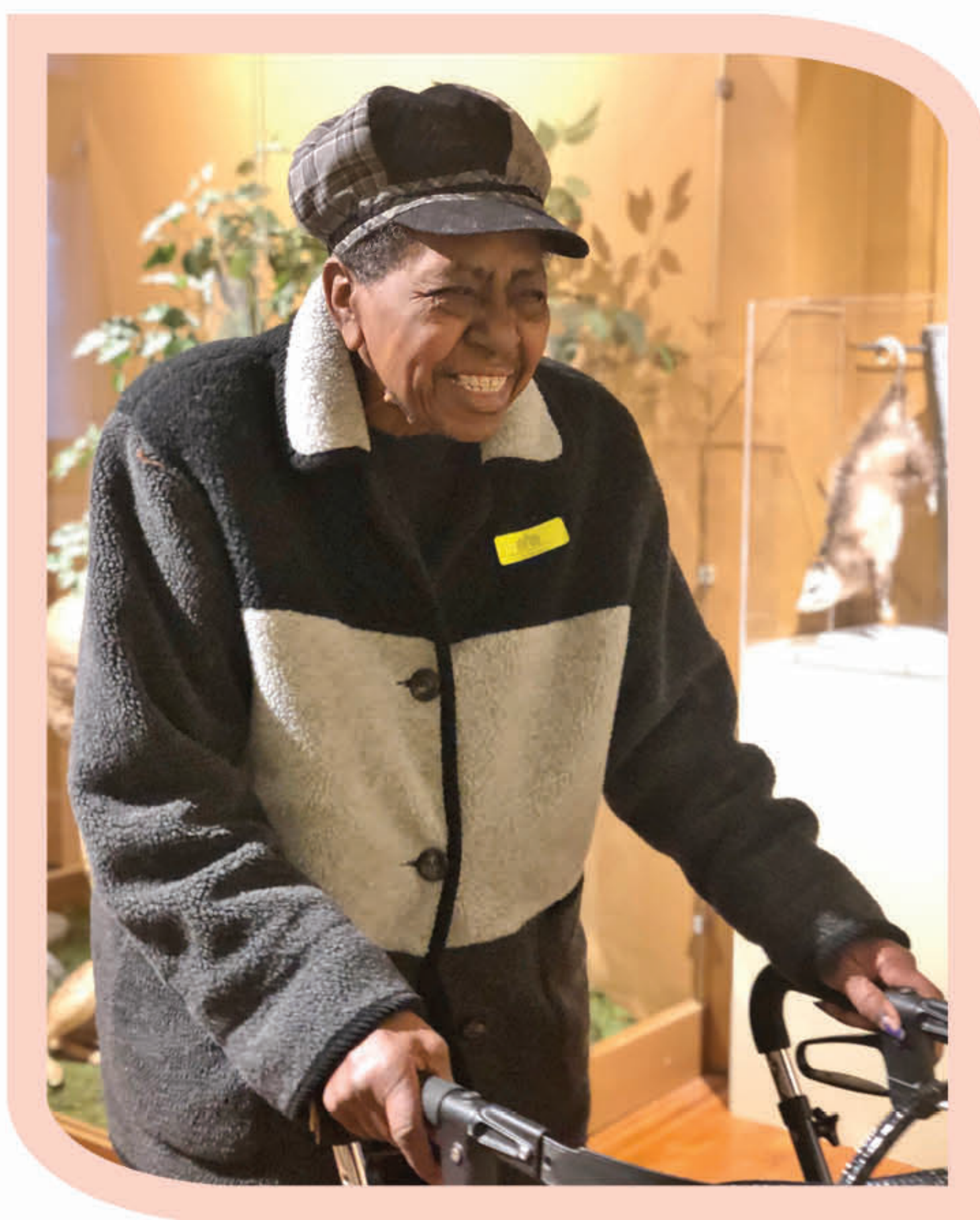


SEC In Our Community

Liz Stringer, CNA Training Class instructor at Saint Elizabeth Home helps students (l-r) Kerry Macera, Ben Champagne, and Diona McNeil prepare for the state certification exam.



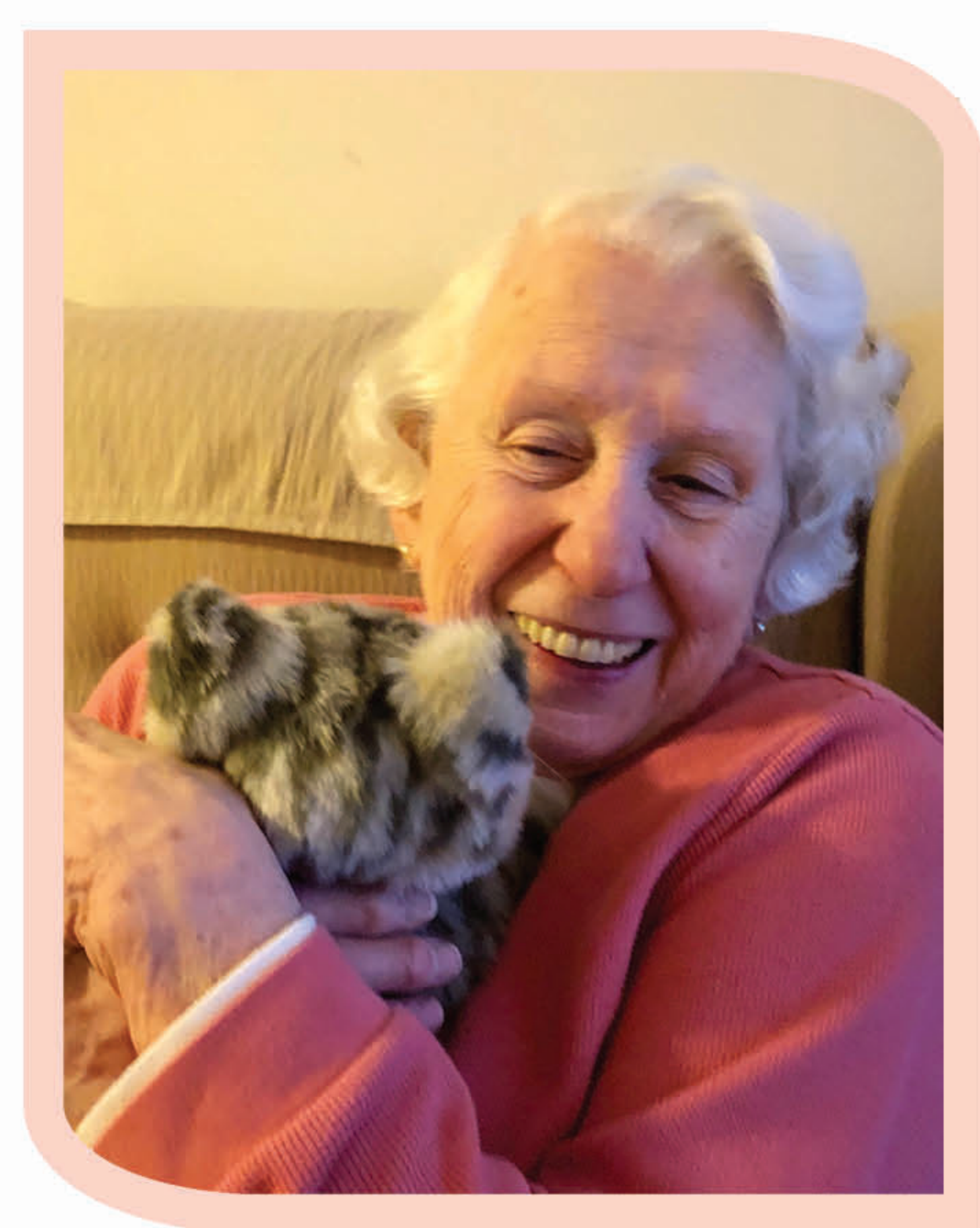
Our Mission... to provide exceptional, compassionate care in an array of settings. We embrace the needs of each individual in an environment where those we care for, and work with, are treated **just like family**.



Marilyn Washington, resident at Saint Elizabeth Place, enjoys an outing to the Museum of Natural Science.



One of these could be a winning card! Resident, Philomena Franklin, with Brittney Parfitt, CNA, Saint Elizabeth Home.



Saint Elizabeth Court resident, Jeanette Parrillo, is thrilled with her new kitty from Joy For All Companion Pets.

■ SAINT ELIZABETH MANOR
Short term rehab and long term care

■ SAINT ELIZABETH COURT
Affordable assisted living

■ CORNERSTONE ADULT SERVICES, INC.
Adult day centers



SEC

Meeting Needs

Gratitude and Friendship

Compassionate care leads to lasting bond

Anthony (Tony) Agostenelli faithfully visits Saint Elizabeth Manor's memory care wing every Wednesday. What makes this unusual is that Tony's wife Barbara passed away at the Manor over two years ago. "I bring magazines and coupons for the staff, and chat with Barbara's former roommate."

When Barbara was diagnosed with early memory loss, the Agostenelli's were proactive in preparing for the future, reading books and becoming as educated about Alzheimer's disease as possible. "We didn't follow our emotions, said Tony, we followed our heads." The couple's preparation allowed them to optimize the time they had together, and to seek out the very best care options as needed.

During Barbara's early stages of dementia, Tony hired home companions, but as the disease progressed, Tony turned to Cornerstone Adult Services for the additional care and support they provide. Barbara attended Cornerstone's adult day health center in Bristol, which helped her to remain home for an additional two years.

When it became evident that Barbara needed nursing home care, Tony knew exactly where he wanted his wife to be. "My mother and my father-in law were residents at



Tony Agostenelli with Elena Gallegos, CNA, one of his wife Barbara's primary caregivers while at Saint Elizabeth Manor.

the Manor. It's a damn good place. Everybody is top flight and the staff works as a great team. Best in the state!"

The friendships forged between family and staff during the seven years Barbara resided at the Manor live on. Regardless of how busy Tony's schedule may be, the very active 85 year old always makes time to include a weekly visit to Saint Elizabeth Manor.

"I am eternally grateful for the caregiving staff at Saint Elizabeth Manor for making my wife's stay the best it could be."

Saint Elizabeth Community Initiates One Call System



Saint Elizabeth Community has engaged **One Call Now** to provide automated notification via a phone call in the event of an emergency. This phone system will only be used to communicate important information to the designated contact for each individual in our care in our skilled nursing residences, green house homes, assisted living, adult day centers, home care clients and apartments.

We will begin with a test of the one call now system sometime in February. After that initial test this system will only be used for emergencies or to communicate crucial information. We are not using the one call system for short term rehab patients' emergency contacts, as their length of stay in our nursing homes is often not very long. In the event of an emergency, individual calls will be made to the short term client's designated contact.

If you have questions, please reach out to the Administrators at the appropriate location.

Your support matters to Rachel!



Cornerstone participant, Rachel, works on her crocheting with staff member, Susan St. Sauveur.

When Rachel first arrived at Cornerstone, her moderate memory loss due to early onset dementia had her distressed constantly. “It was heartbreaking to see her so anxious and upset,” explains Dottie Santagata, Administrator. “We knew we had to help her and we understood the importance of getting to know Rachel and her unique needs.”

Thanks to the team’s personalized attention...Rachel blossomed! She is happy, laughing and joking with the staff often telling her husband, Angelo, in the morning that she needs to hurry up because “I want to go see the girls.”

She’s like a new person,” said Linda Sinnott, Program Director. “It’s been wonderful to work with Rachel to identify activities that give her day meaning. To see her happy and socializing is heartwarming.”

Charitable donations make it possible for Cornerstone to provide the very best care to Rachel and so many others who rely on Cornerstone. “With donations from grateful friends and families, or individuals who simply recognize the work we do every day,” explains Dottie, “we are able to have a higher level of staff in our day centers. More staff provides our care team more time and flexibility to understand the needs of each of our participants. I assure you, every gift, regardless of the size, is felt here every day. Thank you!”

A Meaningful Connection



Like so many family members, Judy Cady felt very much a part of the Saint Elizabeth Home family during her Dad’s stay. When he passed, Judy found herself wanting to stay connected, “I missed everybody. I missed the people who had become so important to me so I became a volunteer. Volunteering gives me a chance to keep these relationships going.”

Judy began giving her time at the Home and soon found herself interested in Rose Bids. She now serves as Chair of the Auction Prize Committee.

“I love working on Rose Bids. I enjoy the camaraderie and it’s really helped me grow as a person. I’ve always felt welcome and like I belonged. I know what I do is important and that it matters.”

Stay connected!

If you are interested in getting involved with Saint Elizabeth Community’s fundraising events, please contact Geri Manning at 401-773-7420.

We’d love to have you!

SAVE THE DATE

SEC GOLF CLASSIC

**Monday, June 17, 2019
Warwick Country Club**

*The Golf Classic sold out last year!
Don’t wait - secure your sponsorship
and save your spot today!*

*Please call Geri Manning,
Philanthropy Officer at 401-773-7420.*



**Thank you to SEC donors and volunteers –
you are important partners in our work!**



Saint Elizabeth Manor Family Council Welcomes New Members

Family members or caregivers of residents at Saint Elizabeth Manor are invited to participate in the Manor's Family Council. The council provides an opportunity to meet other family members, and to work together as a team to support the care of their loved ones. The family council is a positive forum for making suggestions for improvements or changes, and works in partnership with Saint Elizabeth Manor administration. The family council meets on the first Wednesday of every month at 3:30pm in the library at Saint Elizabeth Manor. For more information, call Charlie Galligan, Family Council Chairman at 401-253-3518.

Saint Elizabeth Community Sends Staff to LeadingAge Leadership Academy



(l-r) Marlene Verria, Barbara Gavin and Marianne Wolcott

Saint Elizabeth Community will be sending three staff members to the LeadingAge CT Leadership Academy this year. They are: Barbara Gavin, Director, SASH Program, Saint Elizabeth Place; Marlene Verria, Director of Nursing, Saint Elizabeth Manor; and Marianne Wolcott, Administrator, Saint Elizabeth Home. The one year leadership training program is for health care professionals from LeadingAge in CT and RI. The program consists of quarterly two day work sessions, as well as weekly or bi weekly team conference calls.

CNA Training Classes

Saint Elizabeth Home
March 12 - May 16, 2019
Call 401-336-3545

Saint Elizabeth Manor
April 15 - June 19, 2019
Call 401-253-2300

For more information visit
www.stelizabethcommunity.org

SAINT ELIZABETH COMMUNITY Board of Trustees

Officers:

Chair:

Philip C. Slocum

Vice Chair:

Craig W. Carpenter

Secretary:

Steven H. Kitchin

Treasurer:

Claire C. Flaherty

Corporate Counsel

Jeffrey W. Kasle

Trustees:

Richard Crellin

Kristen DiSanto

Robin Dziuba

Lisa Holley

Peter Hollmann, M.D.

Rt. Reverend W. Nicholas Knisely

E. Paul Larrat, Ph.D., R.Ph.

Patricia Wegrzyn McGreen

Timothy Murray, CPA, CVA

Robert H. Pease, Jr.

Wayne D. Pelland

Steven W. Tilley

Stephen Tingle

Judy W. Vigar

Steven J. Horowitz, M.B.A.

President & CEO

Saint Elizabeth Community

Administrative Staff Saint Elizabeth Community

Steven J. Horowitz, M.B.A.

President and CEO

Erica Bryson, CFRE

Chief Philanthropy Officer

Maggie Connelly, LALA

Administrator

Saint Elizabeth Court

Ken Coté

Administrator

Saint Elizabeth Place | Saint Elizabeth Terrace

Mark J. Loiselle, CPA, CGMA

Chief Financial Officer

Christine L. McGuire, CPA

Director of Finance

Roberta B. Merkle, Esq.

Executive Vice President, Strategic Initiatives

Kathleen Parker

Director of Admissions

Tom Radican

Facilities Engineer

Mary C. Rossetti

Director of Marketing and Communications

Caroline Naughton Rumowicz

Director

Cathleen Naughton Associates

Elizabeth I. Russell

Administrator

Saint Elizabeth Manor

Dottie Santagata, MSW

Administrator

Cornerstone Adult Services, Inc.

Matthew R. Trimble, CNHA

Chief Operating Officer

Marianne Wolcott, LNHA

Administrator

Saint Elizabeth Home

If you do not want to receive direct mail solicitations from Saint Elizabeth Community, please write to us at 2364 Post Road, Suite 100, Warwick, RI 02886 or email ypierce@stelizabethcommunity.org