

Adult Day Programs Celebrate 50 Years



Roberta Merkle, Matt Trimble and Jessica Gosselin

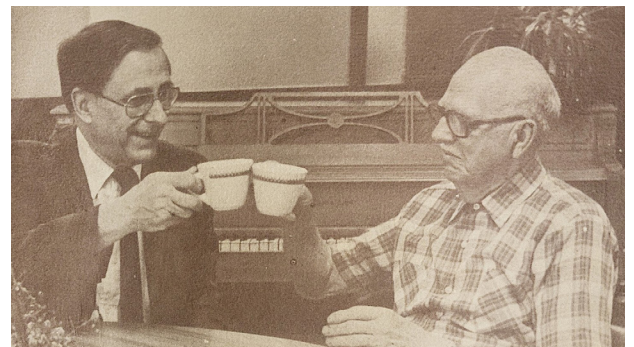
For more than fifty years, the adult day centers of Saint Elizabeth Community have provided engaging, supportive services to the elders in our care. We're so pleased to celebrate this milestone and look forward to what lies ahead.

In 1973, a group of community members from the Warwick Central Baptist Church identified a critical need to provide a safe space for elder adults to spend their day while also offering relief to their caregivers. They created the Central Geriatric Daycare Center (CGDC), one of the first in the country. As Pat Liberty, a retired pastor from the church explained,

“This concept was revolutionary...no one was thinking of providing care to elder adults during the day. We were among the first in the country to make it happen.”

The program began humbly in an old church building in Warwick Neck. To raise funds, volunteers held an art show featuring the works of local artists Maxwell Mays and Nelda Howell.

The late Bishop Covell, pastor of Warwick Central Baptist Church was able to hire a director, Roberta Merkle, to run the CGDC. Roberta took the bull by the horns, introducing new ideas and expanding into new communities, creating Cornerstone Adult Services. In 2009, Cornerstone joined Saint Elizabeth Community, ultimately offering adult day services in four locations: Warwick Neck where it began, Apponaug, Bristol and South Kingstown.



Rev. Bishop Covell and a participant enjoy coffee in the early days.

“None of this would have been possible without the tremendous efforts of Roberta and her staff over the years,” praised Saint Elizabeth Community CEO Matt Trimble. Today, the four sites fall under the capable hands of Jessica Gosselin, Director of Saint Elizabeth Adult Day Centers. She and the team at Saint Elizabeth Community are providing compassionate care with modern innovations.

The Memory Care Center in Warwick Neck now offers specialized care for adults experiencing early memory loss from Alzheimer's disease and dementia. The Apponaug Center focuses on the specific needs of elder adults facing challenges from motion and mobility disorders like Parkinson's Disease.

Thank you to everyone who has supported our adult day programs over the past fifty years including volunteers, donors, staff, our cherished participants and their loving families!

Message from the President & CEO



Dear Friends,

In my recent letter to the Community, I expressed my concerns regarding the obstacles facing nursing homes in Rhode Island: a rapidly growing elder population, staffing shortages throughout the healthcare industry and low reimbursement rates from Medicaid and insurance providers.

We are committed to addressing these challenges in new and innovative ways to continue to provide the best, most compassionate care to our elders.

And the work of Saint Elizabeth Community gives us much to celebrate as we head into the holiday season. As we shared in our cover story, our Adult Day programs are celebrating 50 years of providing care to elders in need. And we are looking toward the future as we address the needs of adults impacted by diseases like Alzheimer's and Parkinson's.

Two hundred and fifty guests joined us for our Rose Bids Auction and Gala, helping to raise more than \$106,000 for services to our elders. Guests generously supported our Opening Minds Through Art program which provides art therapy for people living with dementia. Read more and see photos from the event on pages 6 and 7.

With mixed emotions, we recognize two outstanding community members who are retiring from their roles: Geri Manning, our Philanthropy Officer and Cheryl Patnaude, our Elder Justice Advocate with the Haven for Elder Justice. We truly appreciate all that they have contributed to the Saint Elizabeth Community.

Please take a look at the rest of our newsletter for inspiring and compelling stories about the care we provide for our elders. Know that none of our work would be possible without your generosity. We appreciate your continued support as we meet the challenges ahead.

Thank you,

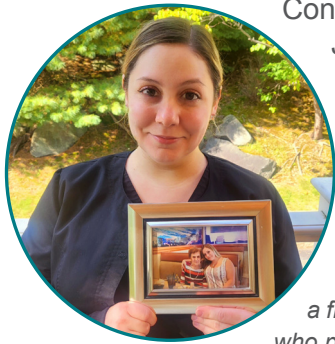
Matthew R. Trimble, NHA
President & CEO

P.S. We hope you'll stay in touch. Please be sure to follow us on social media: Facebook, Instagram, LinkedIn and YouTube or subscribe to our E-News on our homepage: stelizabethcommunity.org.

*We are committed to addressing these challenges
in new and innovative ways to continue to provide the best,
most compassionate care to our elders.*

- Matthew R. Trimble, President & CEO

Becoming an RN One CNA's Remarkable Journey



Congratulations to Saint Elizabeth Home's Jillian Coffey, CNA who has been accepted into New England Institute of Technology's Associate Degree in Nursing Program! Not only are we proud of her achievement, we are honored to have Jillian, a team member, represent the organization.

Jillian Coffey, CNA at Saint Elizabeth Home holding a framed photo of her beloved resident, Gloria Farina, who passed in July 2021 at the age of 99. Gloria inspired Jillian to pursue a career in nursing.

Saint Elizabeth Community's ongoing partnership with NEIT strengthens the workforce initiatives of the organization, while having a direct impact on the individual employees who benefit from a tuition-free opportunity.

Jillian enrolled in Saint Elizabeth's CNA Training program in December of 2014, and began her journey working at Saint Elizabeth Home in "The Bay" neighborhood following graduation. As an experienced caregiver of nearly ten years, Jillian is able to grow in her career by earning her nursing degree.

"The eighteen month accelerated RN program allows me to further my career while continuing to work at Saint Elizabeth Home," said Jillian with enthusiasm.

Following in her mother's footsteps as a Registered Nurse, she acknowledges that her mom is her mentor and biggest supporter, along with the late Gloria Farina, her beloved resident featured in the photograph. In honor of the special bond they shared, the meaningful relationship that blossomed is what inspires Jillian towards enhancing her career.

"Working in the healthcare field while fulfilling my college degree gives me an advantage to understanding what my future in nursing will be." Jillian proclaims, "I feel very fortunate to have this opportunity."

Saint Elizabeth Home Voted #1



Saint Elizabeth Home was rated #1 Nursing Home in Rhode Island in the *Providence Journal* Community's Choice Awards. Our skilled nursing home located in East Greenwich offers short-term rehabilitation, long-term care and specialized memory care. Thank you to everyone who voted and helped us achieve this honor.

LEADERSHIP Board of Trustees

Chair
Steven W. Tilley
SMT Capital, LLC

Vice Chair
Claire C. Flaherty
Retired

Treasurer
Steven H. Kitchin
New England Institute of Technology

Secretary
Judy Vjgar
PepsiCo

Immediate Past Chair
Craig W. Carpenter
Carpenter-Jenks Funeral Home & Crematory

President & CEO
Matthew R. Trimble

MEMBERS
Kristen L. DiSanto
Washington Trust

Robin Dziuba
Merrill Lynch

Frederick G. Harrison
Retired

Peter Hollmann, MD
Chief Medical Officer at Brown Medicine

E. Paul Larrat, Ph.D., R. Ph.
University of Rhode Island

Timothy Murray, CPA, CVA, LLC
Mardo, Lachepelle & Palumbo, LLP

Robert H. Pease, Jr.
Retired

Mark J. Provost, CPA, MST
Provost Financial Consulting, Ltd.

Kimberley Ranalli
Citizens Bank

Scott F. Seaback
RI Temps, Inc.

Phillip C. Slocum
Slocum Insurance/Slocum Realty

SAINT ELIZABETH LOCATIONS

Saint Elizabeth Home
East Greenwich

**Saint Elizabeth
GREEN HOUSE® Homes**
East Greenwich

Saint Elizabeth Assisted Living
Providence

**Saint Elizabeth Apartments for
Seniors and Mobility-Impaired**
Providence

**Saint Elizabeth Apartments
for Seniors**
Warwick

Saint Elizabeth Adult Day Centers
*Apponaug, Bristol,
South Kingstown & Warwick*

Saint Elizabeth Home Care
Warwick

*Our community
of caring...*



Betty Vigliotti receives physical therapy from Julie Glenn, MS, PT, CCCE through Saint Elizabeth Home Care. Betty says that the Home Care team has played a pivotal role in her recovery, allowing her to convalesce in the familiar surroundings of her own home, where she's most comfortable.

James Gerreau & James Andruchow participate in music therapy drumming and creating music together at Saint Elizabeth Adult Day Memory Care Center. A special friendship developed for the two gentlemen as a result of spending quality time with one another at the center.

Completed personalized keepsake boxes are displayed along with smiles from ear-to-ear. (L – R) Harold Maguire & Ron Lemme are proud of their projects created during the weekly woodworking class at the Apponaug Center.

Baking bliss at GREEN HOUSE Home #17 thanks to Nancy Burns! She was able to whip up a batch of her delicious blueberry muffins for all to taste - perfectly golden brown out of the oven.

Uzelle Acciardo, Saint Elizabeth Adult Day Bristol Center participant, proudly displays her canvas artwork during a guided art class! The colorful sailboat painting was admired by all and eventually taken home to share with loved ones.

(photos at right) A lovely afternoon shared with Saint Elizabeth Assisted Living and GREEN HOUSE[®] Home elders on the Blackstone River! Thank you Blackstone Valley Tourism Council for a friendly & informative tour about the interesting history of the river.



Our Mission . . .

to provide exceptional, compassionate care in an array of settings. We embrace the needs of each individual in an environment where those we care for, and work with, are treated just like family.



*Focus on
Philanthropy*



Rose Bids Puts on the Glitz!

Sequins, glitter and sparkles lit up the Crowne Plaza Pavilion on Friday, September 8th as 250 guests dazzled at this year's Rose Bids Auction & Gala, Puttin' on the Glitz. The evening raised more than \$106,000, net of expenses, for the programs and services of Saint Elizabeth Community.



Thank you

Diamond Sponsor
Healthcare Services Group, Inc.

Platinum Sponsors

Carpenter-Jenks Funeral Home and Crematory;
Omnicare, Inc.; The Pease Family, and Unidine

puttin' on the

glitz

ROSE BIDS AUCTION & GALA
Saint Elizabeth Community

Committee

Claire Flaherty and Marcie Maffeo, Co-Chairs

Judy Cady	Elizabeth Henthorne
Carol Christy	Joe Loffredo
Kathie Giorgi	Beth Russell
Kate Hancock	Sheri Smith
Matt Trimble	

Opening Minds Through Art

Rose Bids guests generously support art program

Art connects to the memory in amazing ways. Opening Minds Through Art (OMA) is an award-winning, evidence-based art program that allows people living with dementia to partner with intergenerational volunteers to create meaningful works of art.

The classes are run in 8-week sessions where every elder is buddied up with a volunteer who stays with them throughout the entire process. The results are amazing.

OMA enables people living with dementia to assume new roles as artists and leave a legacy of beautiful artwork.



OMA participant, the late Caroline Barrett and her volunteer buddy creating beautiful artwork.

In 2015, we first brought OMA to Saint Elizabeth Adult Day Centers when two staff members, Linda Sinnott and Bailey Kowal, were sent for training and then conducted sessions for participants.

“We never could have anticipated the tremendous impact the program would have not only on staff and participants, but on the families,” shared Linda Sinnott, Program Director, Saint Elizabeth Adult Day Centers. “One of the most important things OMA does is focus on what a person with dementia CAN do; not what they can’t do, but what they still can do. And there were so many heartwarming stories.”

One of those stories was of VJ, who became part of the Saint Elizabeth Adult Day family in 2014. “At just 56 years old, my late wife, VJ, was diagnosed with early onset dementia,” began Chuck Anastasia in a heartfelt video shared at Rose Bids.



VJ proudly shares her masterpiece.

“She truly enjoyed painting in Opening Minds Through Art - it provided a creative outlet and a sense of achievement. At the end of the program there was a gallery night at the center for the participants and families. Each of our children now has a piece of art created by VJ as an enduring memento of their mom’s creativity although (dementia) took her from us way too soon.”

Inspired by stories shared by Linda and Chuck, guests at Rose Bids donated \$27,750 to help continue the OMA program at our Adult Day Centers and expand to elders throughout Saint Elizabeth Community. We look forward to seeing the elders’ creations.



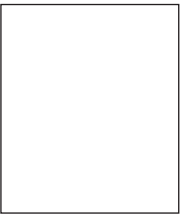
Scan the QR code to watch a video of VJ’s story!



170 years
OF TRUSTED CARE

2364 Post Road, Suite 100
Warwick, RI 02886

Trusted Care Since 1882



IN THIS EDITION

SAINT
ELIZABETH
COMMUNITY
Trusted Care Since 1882



- **Adult Day Celebrates 50 Years**
- **Rose Bids Puts on the Glitz to Raise Funds for Elders**
- **Opening Minds Through Art for Elders with Memory Loss**
- **Saint Elizabeth Home rated #1 by *Providence Journal***

At our South Kingstown Adult Day Center, Irene Nunez-Lewis crafts with participant Caroline Salvatore.

FOLLOW US ON SOCIAL MEDIA

